



# HPE Networking learning paths

HPE Networking Education Services

May 2026

# Contents

[HPE Aruba Networking learning paths](#)

[HPE Juniper Networking learning paths](#)

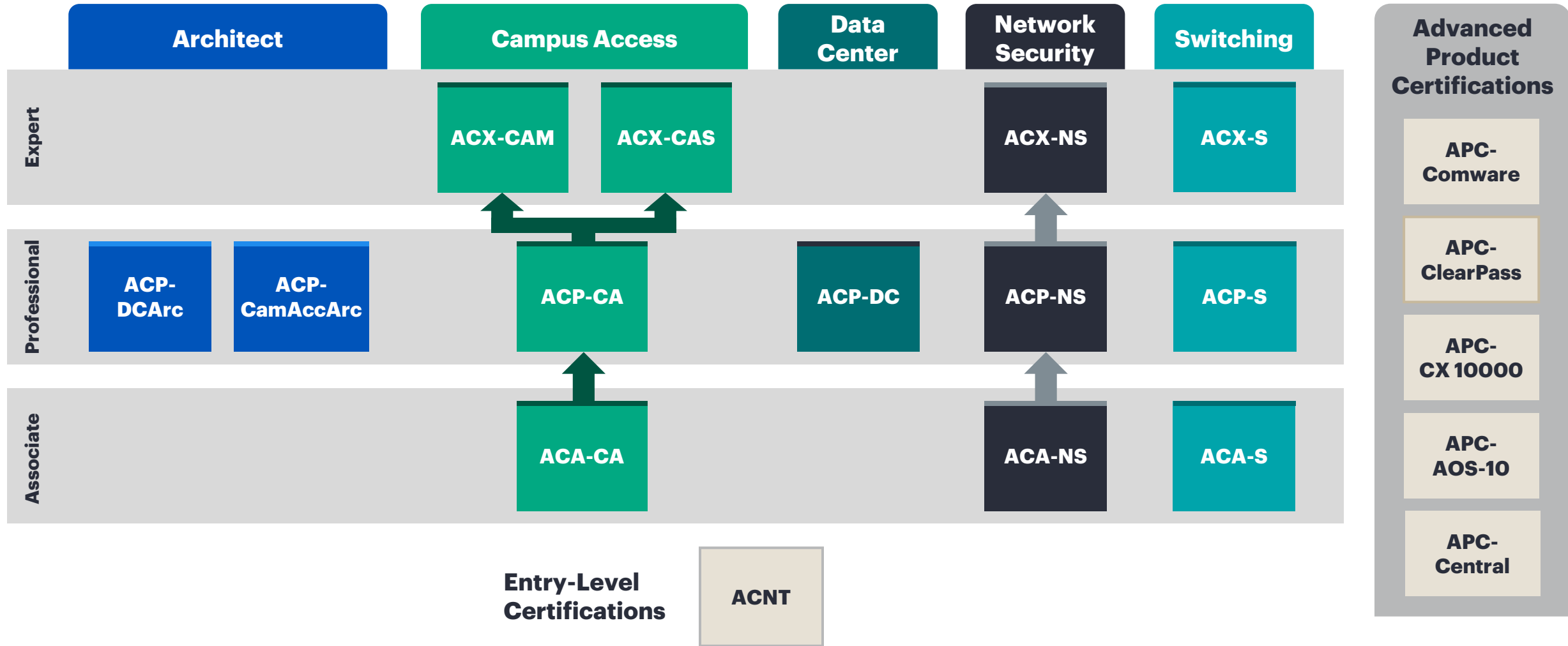
[Silver Peak learning paths](#)

[Delivery methods](#)

# HPE Aruba Networking learning paths



# HPE Aruba Networking certification program framework



# HPE Aruba Networking courses with certifications

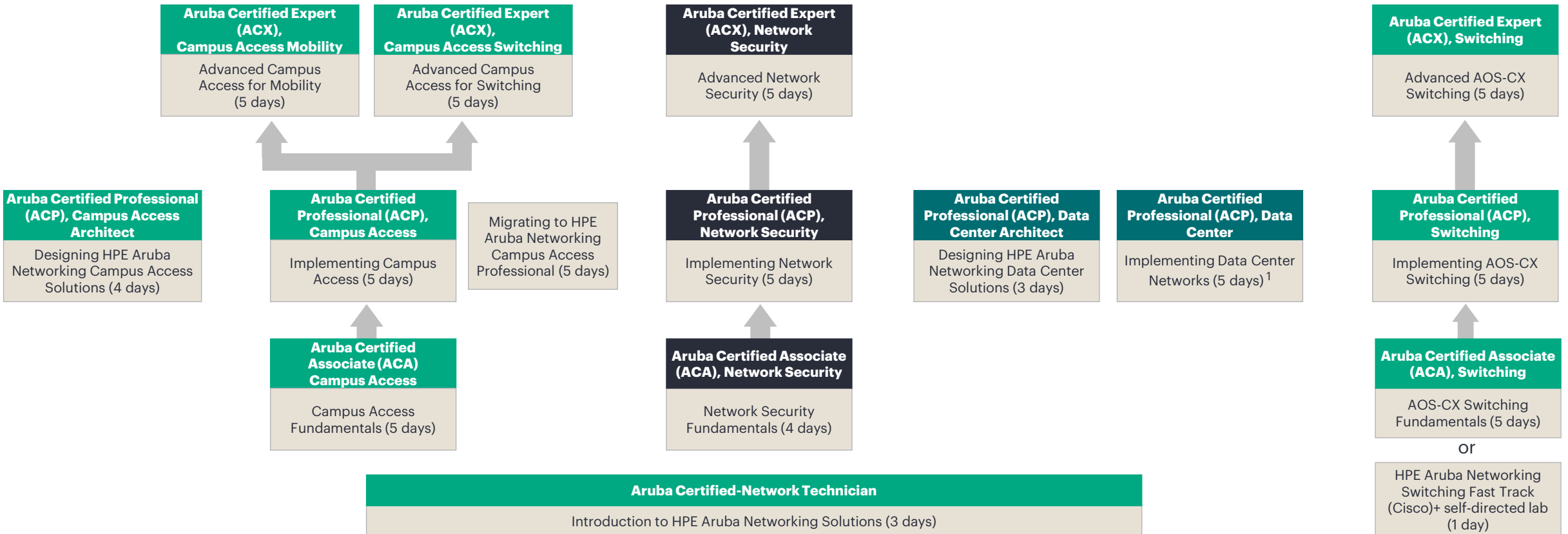


## Campus Access

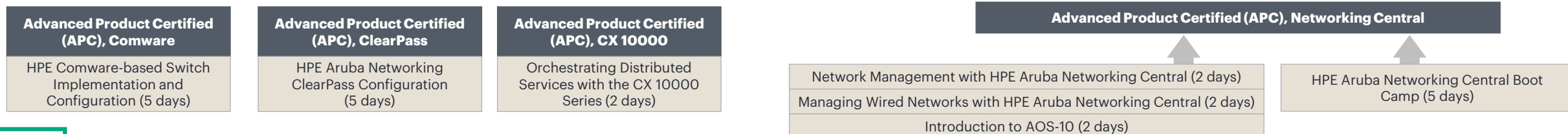
## Security

## Data Center

## Switching



## Product Certifications



**Notes:** Information current as of May 2026. Course and exam information (length, availability, content, etc.) is subject to change; refer to [www.hpe.com/networkingtraining](http://www.hpe.com/networkingtraining) for the most current information. 1. Before enrolling in the Implementing Data Center Networks course, learners should have the Aruba Certified Professional (ACP), Campus Access or Aruba Certified Professional (ACP), Switching certifications, or acquire equivalent knowledge.

# HPE Aruba Networking curriculum (1)

 Course

## Management

<b>Configuring Network Automation Solutions</b>	<b>4 Days</b>	<b>Cloud Essentials</b>	<b>On-Demand</b>
	<b>On-Demand</b>		
<b>Network Management with HPE Aruba Networking Central (AOS-8)</b>	<b>2 Days</b>	<b>Cloud Automation Essentials</b>	<b>On-Demand</b>
	<b>On-Demand</b>		
<b>Using AI in HPE Aruba Networking (2 days)</b>	<b>2 Days</b>	<b>AI Prompts for Networking Essentials</b>	<b>On-Demand</b>
	<b>On-Demand</b>		
		<b>Network Automation Essentials</b>	<b>On-Demand</b>
		<b>HPE Aruba Networking Central Essentials</b>	<b>On-Demand</b>
		<b>Modern Campus Network Management Techniques</b>	<b>On-Demand</b>

## General

<b>Configuring HPE Aruba Networking SD-Branch</b>	<b>4 days</b>	<b>Networking for Absolute Beginners</b>	<b>On-Demand</b>
	<b>On-Demand</b>		
		<b>Networking Essentials</b>	<b>On-Demand</b>

**Notes:** Information current as of May 2026. Course and exam information (length, availability, content, etc.) is subject to change; refer to [www.hpe.com/networkingtraining](http://www.hpe.com/networkingtraining) for the most current information.



# HPE Aruba Networking curriculum (2)

 Course

## Campus Access

<b>AOS-10 Implementation and Configuration</b>	<b>5 days</b> On-Demand	<b>Wi-Fi 7 Essentials</b>	<b>On-Demand</b>
<b>Configuring Mobility with AOS-8 Level 1</b>	<b>3 Days</b> On-Demand	<b>HPE Networking Instant On Implementation and Configuration</b>	<b>On-Demand</b>
<b>Configuring Mobility with AOS-8 Level 2</b>	<b>5 Days</b> On-Demand	<b>Campus Access Design Essentials</b>	<b>On-Demand</b>
<b>Configuring Mobility with AOS-8 Level 3</b>	<b>5 Days</b> On-Demand	<b>Mobility Essentials</b>	<b>On-Demand</b>
<b>Configuring HPE Aruba Networking Instant Access Points</b>	<b>3 Days</b> On-Demand	<b>AOS-10 Essentials</b>	<b>On-Demand</b>
<b>Managing Campus Networks with the Airwave Management Platform</b>	<b>3 Days</b> On-Demand	<b>HPE Aruba Networking Campus Access Essentials</b>	<b>On-Demand</b>

## Security

<b>HPE Aruba Networking ClearPass Advanced Configuration</b>	<b>5 days</b> On-Demand	<b>Network Security Essentials</b>	<b>On-Demand</b>
		<b>HPE Aruba Networking ClearPass Integration to the Cloud</b>	<b>On-Demand</b>

Notes: Information current as of May 2026. Course and exam information (length, availability, content, etc.) is subject to change; refer to [www.hpe.com/networkingtraining](http://www.hpe.com/networkingtraining) for the most current information.



# HPE Aruba Networking curriculum (3)

 Course

## Data Center

<b>Orchestrating Data Center Networks with HPE Aruba Networking Fabric Composer</b>	<b>3 Days</b>	<b>CX 10000 Series Switching Essentials</b>	<b>On-Demand</b>
	<b>On-Demand</b>		
		<b>HPE Aruba Networking Data Center Essentials</b>	<b>On-Demand</b>
		<b>Data Center Design Essentials</b>	<b>On-Demand</b>

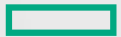
## Switching

<b>Configuring AOS-S Switches Level 1</b>	<b>3 days</b>	<b>Comware Essentials</b>	<b>On-Demand</b>
	<b>On-Demand</b>		
<b>Configuring AOS-S Switches Level 2</b>	<b>5 days</b>	<b>How to Build an HPE Aruba Networking Virtual Switching Lab</b>	<b>On-Demand</b>
	<b>On-Demand</b>		

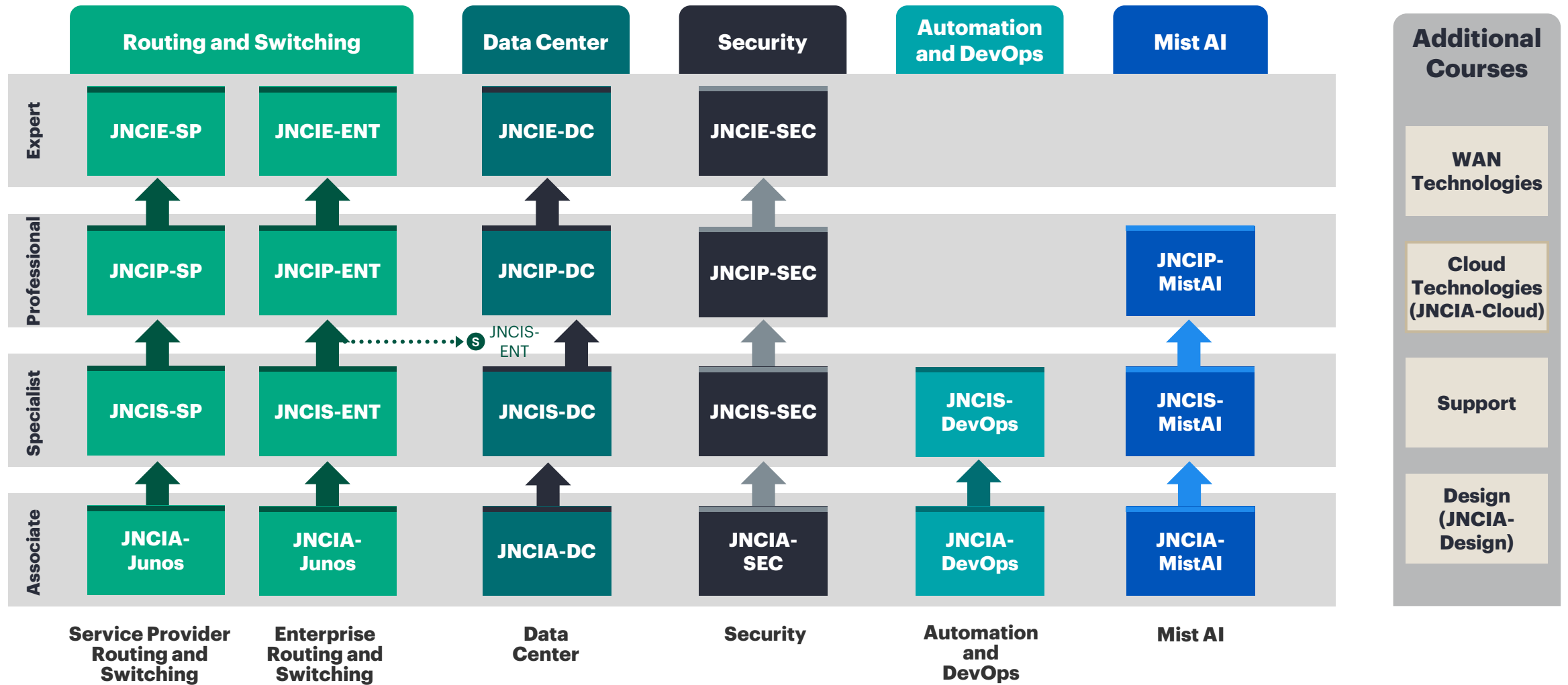
**Notes:** Information current as of May 2026. Course and exam information (length, availability, content, etc.) is subject to change; refer to [www.hpe.com/networkingtraining](http://www.hpe.com/networkingtraining) for the most current information.



# HPE Juniper Networking learning paths



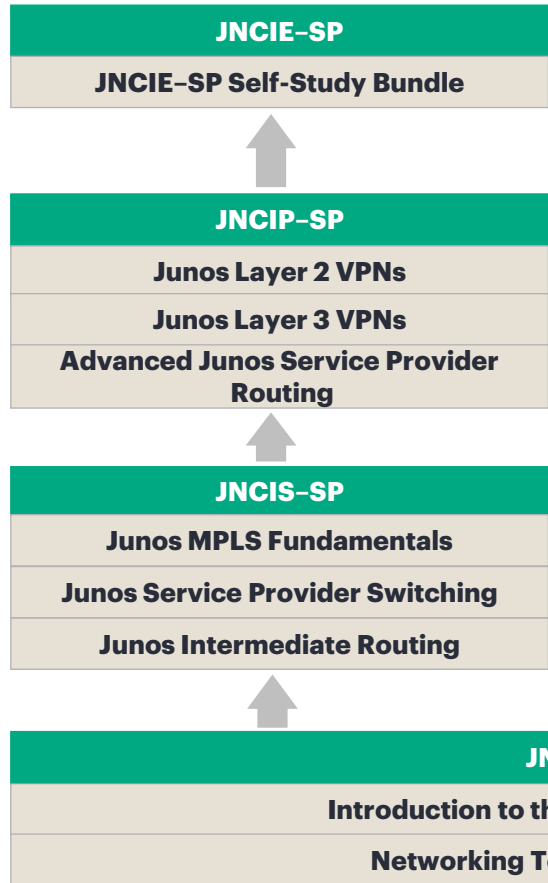
# HPE Juniper Networking certification program framework and additional courses



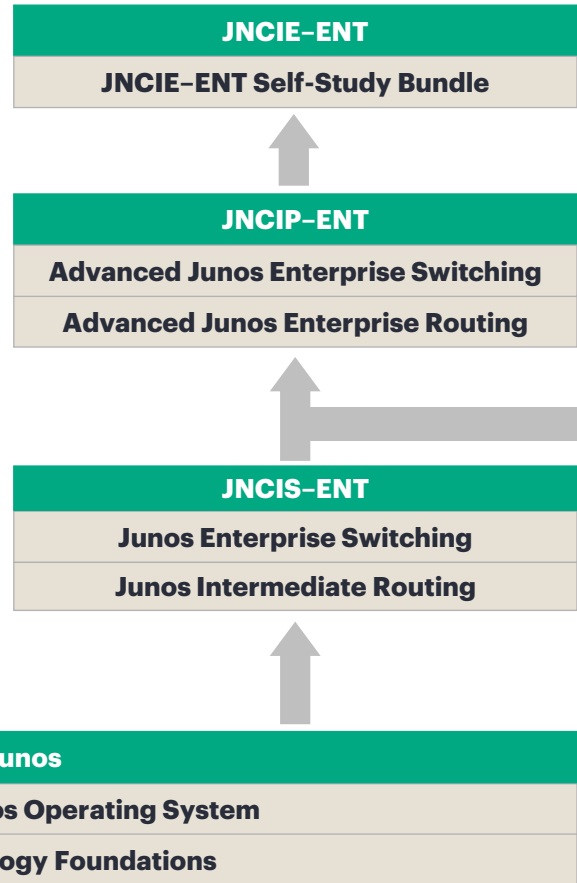
# Junos-based curriculum



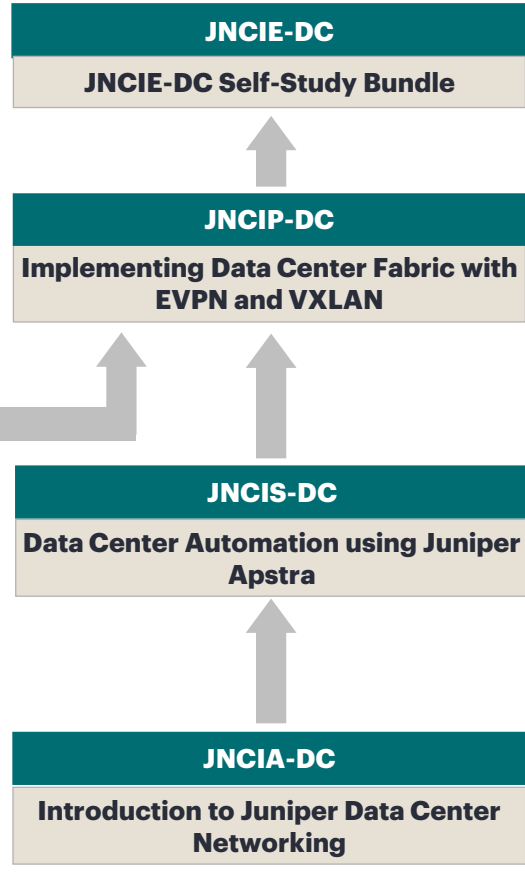
## Service Provider Routing & Switching



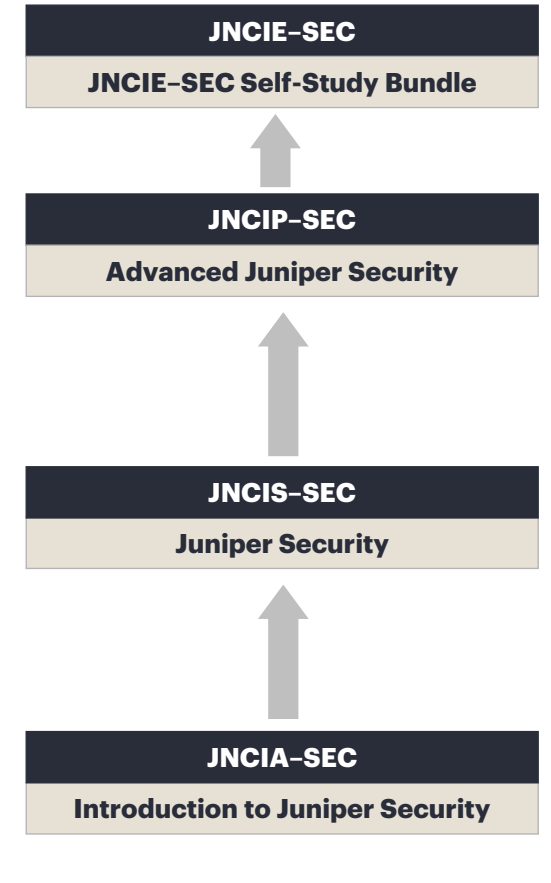
## Enterprise Routing & Switching



## Data Center



## Network Security



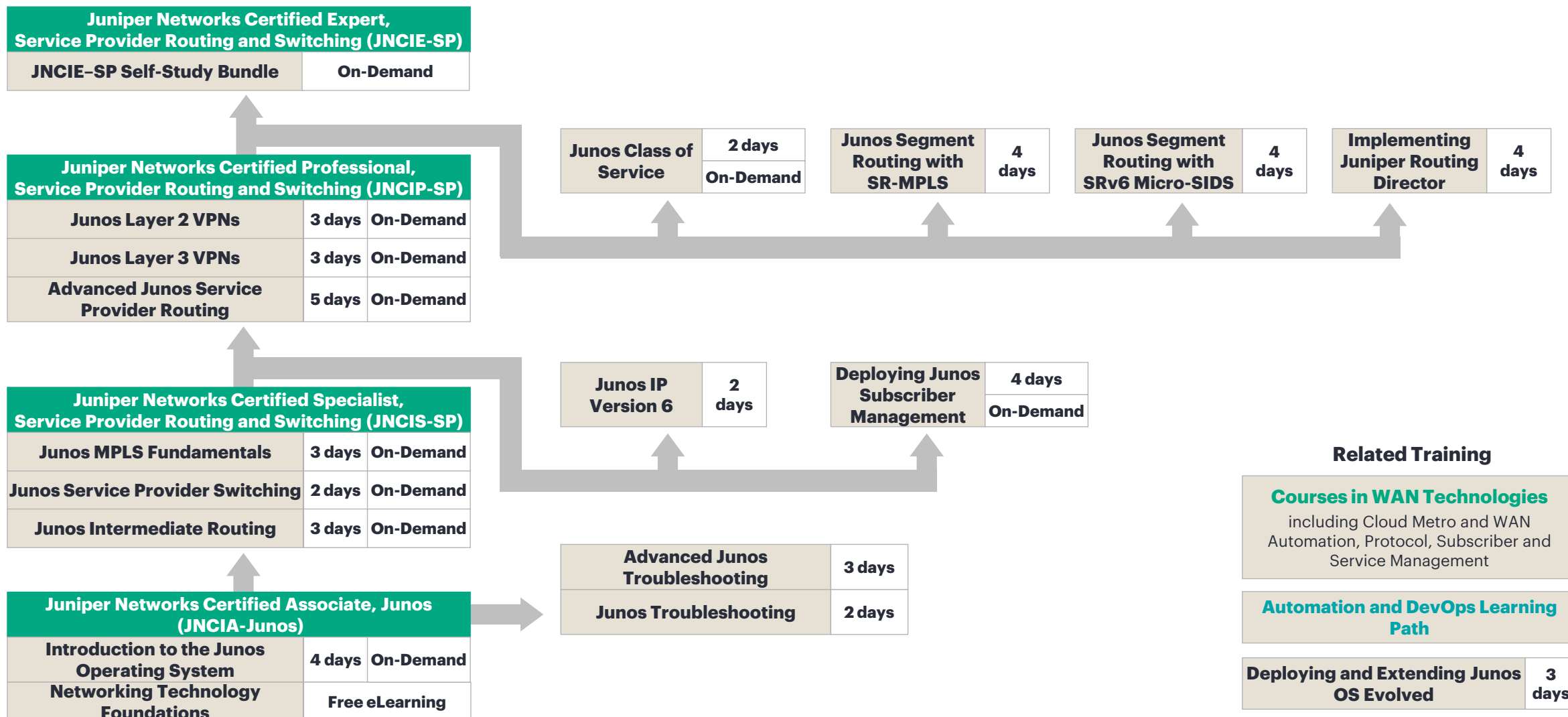
**Notes:** Information current as of May 2026. Course and exam information (length, availability, content, etc.) is subject to change; refer to [www.hpe.com/networkingtraining](http://www.hpe.com/networkingtraining) for the most current information.



# Service provider routing and switching



**Certification**  
**Course**



**Notes:** Information current as of May 2026. Course and exam information (length, availability, content, etc.) is subject to change; refer to [www.hpe.com/networkingtraining](http://www.hpe.com/networkingtraining) for the most current information.

# WAN technologies

 Course

## Junos OS Evolved

<b>Deploying and Extending Junos OS Evolved</b>	<b>3 days</b>
---	---------------

## Cloud Metro and WAN Automation

<b>Juniper Cloud-Native Router Workshop</b>	<b>2 days</b>
---	---------------

<b>Juniper Containerized Routing Protocol Daemon Workshop</b>	<b>1 day</b>
---	--------------

<b>Implementing Juniper Routing Director</b>	<b>4 days</b>
--	---------------

<b>Implementing Juniper Paragon Pathfinder and Planner Applications</b>	<b>4 days</b>
---	---------------

<b>Paragon Active Assurance for Automated WAN</b>	<b>2 days</b>
---	---------------

<b>Introduction to Paragon Active Assurance</b>	<b>1 hour</b>
---	---------------

## Protocol Management

<b>Junos Multicast Routing</b>	<b>2 days</b>
--------------------------------	---------------

<b>Junos IP version 6</b>	<b>2 days</b>
---------------------------	---------------

<b>Circuit to Packet</b>	<b>3 days</b> <b>On-Demand</b>
--------------------------	-----------------------------------

## Subscriber and Service Management

<b>Junos Class of Service</b>	<b>2 days</b> <b>On-Demand</b>
-------------------------------	-----------------------------------

<b>Deploying Junos Subscriber Management</b>	<b>4 days</b> <b>On-Demand</b>
--	-----------------------------------

## Related Training

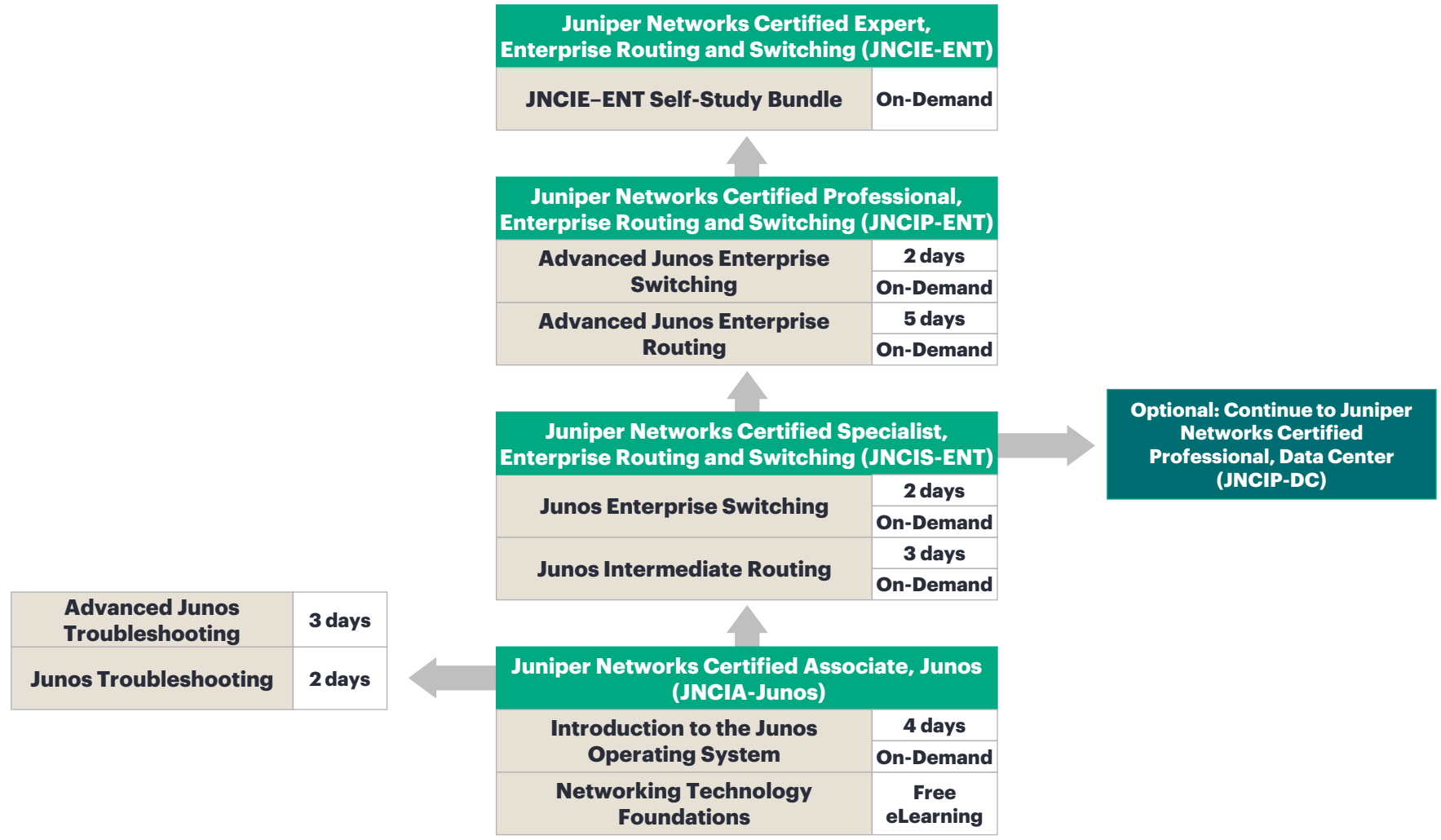
<b>Service Provider Routing and Switching Learning Path</b>
---

<b>Deploying and Managing SD-WAN with Juniper Mist AI</b>	<b>3 Days</b>
---	---------------

**Notes:** Information current as of May 2026. Course and exam information (length, availability, content, etc.) is subject to change; refer to [www.hpe.com/networkingtraining](http://www.hpe.com/networkingtraining) for the most current information.



# Enterprise routing and switching



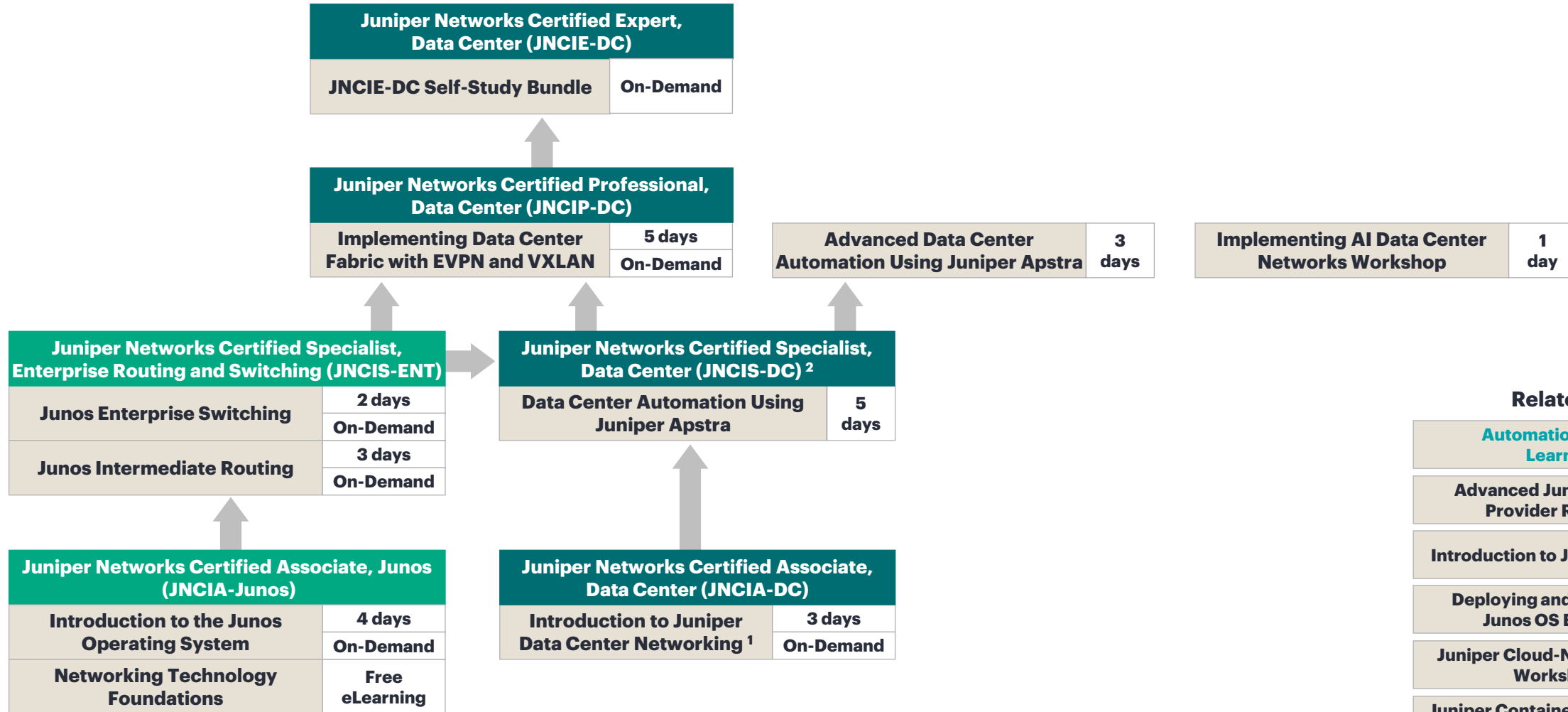
## Related Training

- [Mist AI Learning Path](#)
- [Automation and DevOps Learning Path](#)
- Juniper Switching for Cisco Engineers** | 3 hours
- Junos IP version 6** | 2 days
- Cert Prep: Migrating from the Cisco CCNA to the JNCIA-Junos** | 7 hours

**Notes:** Information current as of May 2026. Course and exam information (length, availability, content, etc.) is subject to change; refer to [www.hpe.com/networkingtraining](http://www.hpe.com/networkingtraining) for the most current information.

# Data center

 **Certification**  
 **Course**



### Related Training

<b>Automation and DevOps Learning Path</b>	
<b>Advanced Junos Service Provider Routing</b>	<b>5 days</b>
<b>Introduction to Juniper Apstra</b>	<b>1 hour</b>
<b>Deploying and Extending Junos OS Evolved</b>	<b>3 days</b>
<b>Juniper Cloud-Native Router Workshop</b>	<b>2 days</b>
<b>Juniper Containerized Routing Protocol Daemon Workshop</b>	<b>1 day</b>

**Notes:** 1. The Introduction to the Junos Operating System course is recommended before taking the Introduction to Juniper Data Center Networking course. 2. The JNCIA-DC or JNCIS-ENT meet the prerequisite for the JNCIS-DC. Information current as of May 2026. Course and exam information (length, availability, content, etc.) is subject to change; refer to [www.hpe.com/networkingtraining](http://www.hpe.com/networkingtraining) for the most current information.

# Security

Certification  
 Course

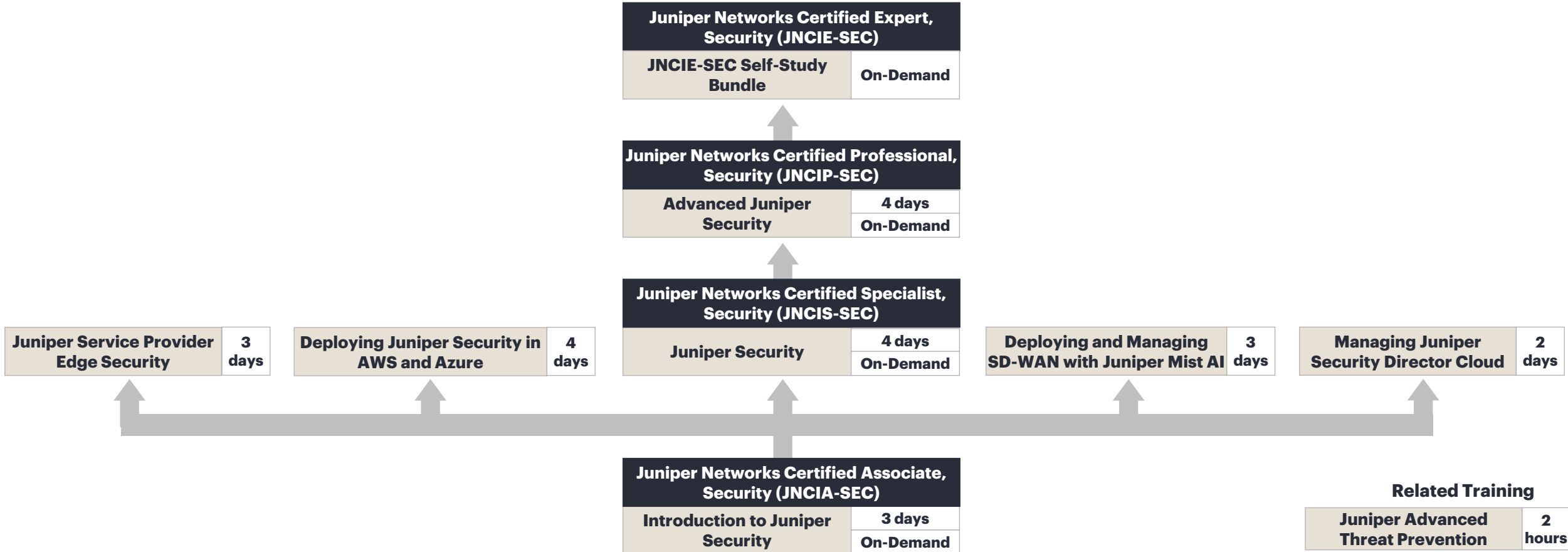
## Service Provider Security

## Public Cloud Security

## Network Security

## SASE

## Management and Analytics

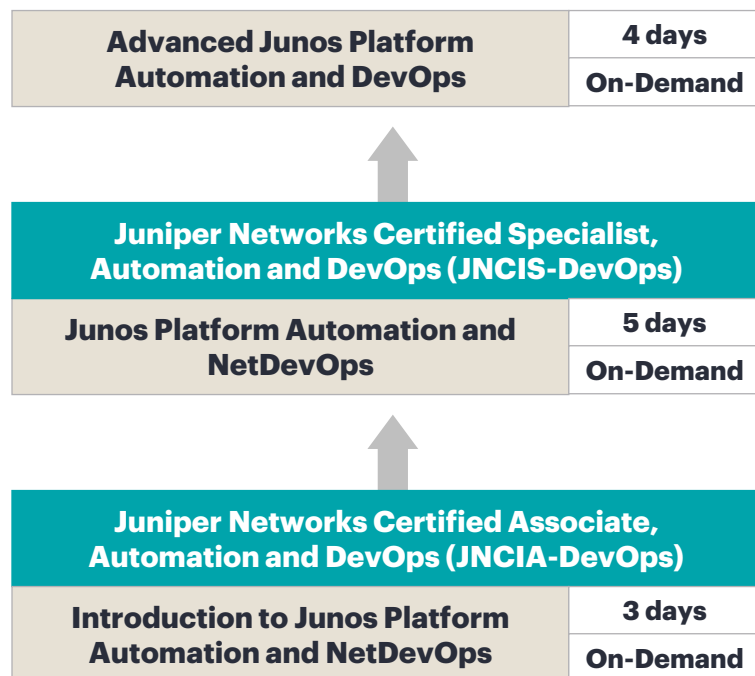


**Notes:** Information current as of May 2026. Course and exam information (length, availability, content, etc.) is subject to change; refer to [www.hpe.com/networkingtraining](http://www.hpe.com/networkingtraining) for the most current information.

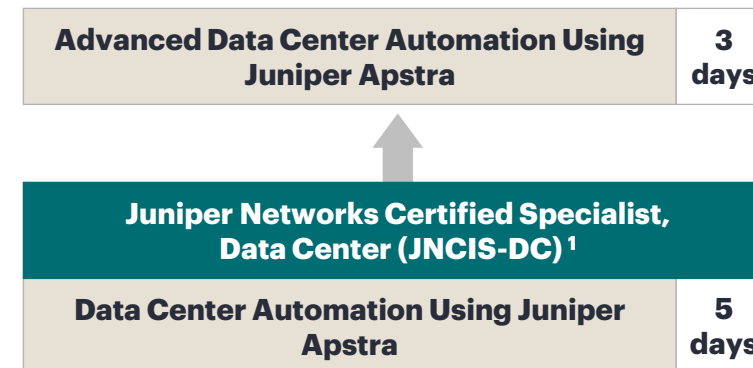
# Automation

 **Certification**  
 **Course**

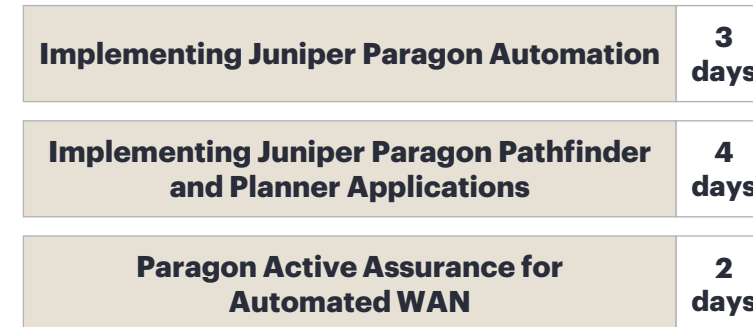
## Platform Automation



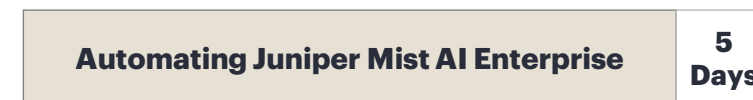
## Data Center Automation



## WAN Automation



## Enterprise Automation



**Notes:** 1. See [Data Center learning path](#) for complete data center training and certification details. Information current as of May 2026. Course and exam information (length, availability, content, etc.) is subject to change; refer to [www.hpe.com/networkingtraining](http://www.hpe.com/networkingtraining) for the most current information.



# Mist AI



<b>Juniper Networks Certified Professional, Mist AI (JNCIP-MistAI)</b>	
<b>Automating Juniper Mist AI Enterprise *</b>	<b>5 Days</b>

<b>Juniper Networks Certified Specialist, Mist AI-Wireless (JNCIS-MistAI-Wireless)</b>	
<b>Deploying and Managing Juniper Wireless Networks with Mist AI</b>	<b>4 days</b> On-Demand

<b>Juniper Networks Certified Specialist, Mist AI-Wired (JNCIS-MistAI-Wired)</b>	
<b>Deploying and Managing Juniper Wired Networks for Campus and Branch with Mist AI</b>	<b>4 days</b>

<b>Deploying and Managing SD-WAN with Juniper Mist AI</b>	<b>3 days</b>
---	---------------

<b>Deploying and Managing Juniper Mist Access Assurance</b>	<b>2 days</b>
---	---------------

<b>Juniper Networks Certified Associate, Mist AI (JNCIA-MistAI)</b>	
<b>Introduction to Juniper Mist AI</b>	<b>3 days</b> On-Demand

To learn Junos-based routing and switching skills, engineers should consider taking courses in the [Enterprise Routing and Switching Learning Path](#)

<b>Session Smart Routers</b>	
<b>Deploying and Managing Juniper SD-WAN with Session Smart Routers</b>	<b>4 days</b>
<b>Introduction to Session Smart Routers</b>	<b>1 hour</b>

<b>Related Training</b>	
<b>Getting Started with Wi-Fi</b>	<b>2 hours</b>
<b>Migrating from Cisco Specialist to Juniper Mist AI</b>	<b>3 hours</b>
<b>Migrating from Aruba Mobility Professional to Juniper Mist AI</b>	<b>3 hours</b>
<b>Juniper Switching for Cisco Engineers</b>	<b>3 hours</b>

**Notes:** \* Before attending the Automating Juniper Mist AI Enterprise course, students should have attended at least one of the Deploying and Managing Wireless Networks with Juniper Mist AI, Deploying and Managing Wired Networks for Campus and Branch with Juniper Mist AI, or Deploying and Managing SD-WAN with Juniper Mist AI courses.. Information current as of May 2026. Course and exam information (length, availability, content, etc.) is subject to change; refer to [www.hpe.com/networkingtraining](http://www.hpe.com/networkingtraining) for the most current information.

# Cloud technologies

 **Certification**  
 **Course**

## Cloud Core Technologies

<b>Juniper Networks Certified Associate, Cloud (JNCIA-Cloud)</b>	
<b>Juniper Cloud Fundamentals <sup>1</sup></b>	<b>3 days</b>
	<b>On-Demand</b>
<b>Getting Started with Cloud</b>	<b>4 hours</b>

**Notes:** 1. Attendance of the [Introduction to the Junos Operating System](#) course is strongly recommended prior to the Juniper Cloud Fundamentals course. Information current as of May 2026. Course and exam information (length, availability, content, etc.) is subject to change; refer to [www.hpe.com/networkingtraining](http://www.hpe.com/networkingtraining) for the most current information.



# Support

 **Course**

<b>Advanced Junos Troubleshooting</b>	<b>3 days</b>
<b>Junos Troubleshooting</b>	<b>2 days</b>
<b>Introduction to the Junos Operating System</b>	<b>4 days</b>
	<b>On-Demand</b>
<b>Networking Technology Foundations</b>	<b>Free eLearning</b>

**Note:** The professional-level courses in the Service Provider Routing and Switching, Enterprise Routing and Switching, and Junos Security learning paths contain additional troubleshooting training.

**Notes:** Information current as of May 2026. Course and exam information (length, availability, content, etc.) is subject to change; refer to [www.hpe.com/networkingtraining](http://www.hpe.com/networkingtraining) for the most current information.



# Design

■ Certification  
■ Course

<b>Juniper Networks Certified Associate, Design (JNCIA-Design)</b>	
<b>Juniper Networks Design Fundamentals</b>	<b>3 days</b>
	<b>On-Demand</b>

Notes: Information current as of May 2026. Course and exam information (length, availability, content, etc.) is subject to change; refer to [www.hpe.com/networkingtraining](http://www.hpe.com/networkingtraining) for the most current information.



# Getting started

<b>Networking Technology Foundations</b>	<b>Free eLearning</b>
--	-----------------------

<b>Getting Started with Cloud</b>	<b>4 hours</b>
-----------------------------------	----------------

<b>Getting Started with Wi-Fi</b>	<b>2 hours</b>
-----------------------------------	----------------

**Note:** These courses teach foundational, industry-standard content and are not-related to each other. They may be taken in any order.

**Notes:** Information current as of May 2026. Course and exam information (length, availability, content, etc.) is subject to change; refer to [www.hpe.com/networkingtraining](http://www.hpe.com/networkingtraining) for the most current information.



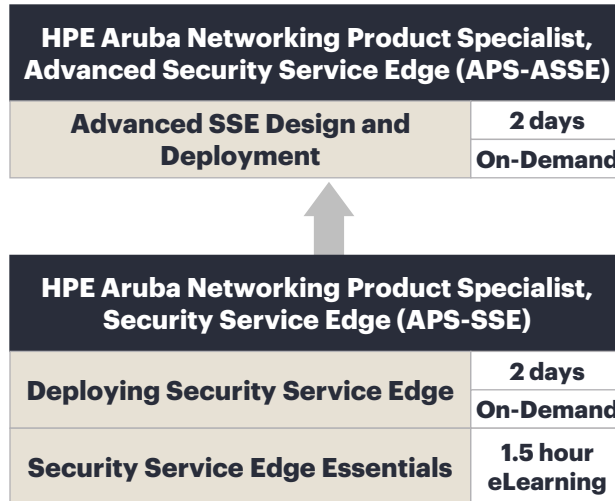
# Silver Peak learning paths



# Silver Peak: Security Service Edge curriculum

 **Certification**  
 **Course**

## Security Service Edge



**Notes:** Information current as of May 2026. Course and exam information (length, availability, content, etc.) is subject to change; refer to [www.hpe.com/networkingtraining](http://www.hpe.com/networkingtraining) for the most current information.



# Silver Peak: SD-WAN curriculum

■ Certification  
■ Course

## EdgeConnect SD-WAN

**HPE Aruba Networking SD-WAN Deployment Expert Practical Exam (ACSDX)**

**HPE Aruba Networking SD-WAN Deployment Professional Practical Exam (ACSDP)**

**HPE Aruba Networking SD-WAN Accreditation Expert Assessment (AASX)**

<b>Advanced SD-WAN Deployments</b>	<b>2 days</b>
	<b>On-Demand</b>

**HPE Aruba Networking SD-WAN Accreditation Professional Assessment (AASP)**

<b>Deploying SD-WAN Technologies</b>	<b>2 days</b>
	<b>On-Demand</b>

<b>SD-WAN Essentials</b>	<b>1.5 hour eLearning</b>
--------------------------	---------------------------

<b>Troubleshooting SD-WAN Networks</b>	<b>2 days</b>
	<b>On-Demand</b>

### Related Training

<b>Designing SD-WAN Networks</b>	<b>1 day</b>
	<b>On-Demand</b>

Notes: Information current as of May 2026. Course and exam information (length, availability, content, etc.) is subject to change; refer to [www.hpe.com/networkingtraining](http://www.hpe.com/networkingtraining) for the most current information.



# Delivery methods

**Private Training - Standard or Customized Delivery:** [www.juniper.net/privatetraining](http://www.juniper.net/privatetraining)

**Contact us:** [training-amer@juniper.net](mailto:training-amer@juniper.net), [training-emea@juniper.net](mailto:training-emea@juniper.net), or [training-apac@juniper.net](mailto:training-apac@juniper.net)

Juniper will host a private, instructor-led class for up to 16 students. Training can be delivered at a customer's facility, virtually (remote instructor and remote students), or a blend of both onsite with remote students. Private classes can be customized based on the client's exact needs.

**On-Demand Courses:** [www.juniper.net/ondemand](http://www.juniper.net/ondemand)

Each course includes self-paced, eLearning modules along with access to real online lab exercises. Students perform the same detailed lab exercises that are taught in instructor-led classes. Courses include 12 months of access to the materials and lab environment. And many are available with closed captioning in multiple languages.

**Open Enrollment Classes:** [www.juniper.net/courses](http://www.juniper.net/courses)

Juniper hosts public classrooms in which the customer can send one or more students to attend. Training will be attended either virtually or at a Juniper or Education Partner's facility.

**All-Access Training Pass:** [www.juniper.net/allaccess](http://www.juniper.net/allaccess)

Access to all instructor-led and On-Demand Juniper courses, for one low price, for a full year. Available for individuals, groups, teams, and enterprises.



# Thank You

