

CARE GUIDE



MACHINE WASH,
BEST AT 30°
AIR DRY RECOMMENDED



NOT INTENDED FOR
CHILDREN UNDER 3



CHILDREN SHOULD
PLAY UNDER ADULT
SUPERVISION ONLY

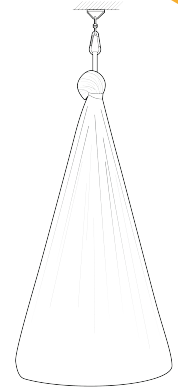
CONTACT US



If you have any questions or queries a member of our staff will always be happy to help. Feel free to contact us by telephone or email and we will make sure to get back to you as soon as possible.

✉ contact@visse-global.com

☎ +1 678 335 1292



INSTALLATION AND CARE GUIDE

VISSE SENSORY SWING



HOW TO
ROPE ATTACHMENT



SAFETY ZONE

It is recommended by the United States Consumer Product Safety Commission to have at least 6 feet in all directions used as a safety zone around a swing set.

This is absolutely the minimum amount of soft landing space you should have around your swing set.

IDEAL CEILING HEIGHT



6-9 Feet

MAXIMUM WEIGHT



220 LBS

WHAT YOU'LL NEED FOR THE INSTALLATION



1 x Drill



1 x hammer



1x wrench



1x stud finder - WOOD only

WOOD

INSTALL ON WOOD



1

Find a sturdy beam on the ceiling by using a stud finder. Make sure you use a pencil to mark both sides of the joist. It's extremely important that you drill into the middle of the joist or beam.



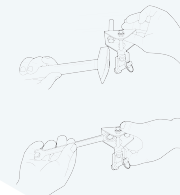
2

Pre-drill two holes in the wooden beam, it is recommended to use a drill bit smaller than 0.2".



3

Pass the screw through the hole in the base of the swing hanger, and use a wrench or electric drill to tighten the screw.



4

Attach the swing and test your installation. Gradually, shift your weight into the swing. If it holds you and it doesn't touch the floor, it means you have installed it correctly.



5

Adjust the height using the daisy chain as you wish.



CONCRETE

STEP BY STEP VIDEO
<https://www.youtube.com/watch?v=KIGsgdFQOU4>



HARDWARE
INSTALLATION

INSTALL ON CONCRETE



1

First, use a pencil to draw 2 holes on the dry wall/concrete ceiling.



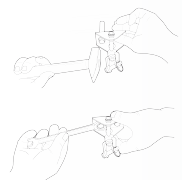
2

Drill two pilot holes with 8 mm drill bit, and then use 12 mm drill bit to clear the holds.



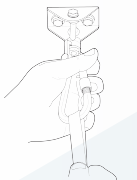
3

Pass the screw through the hole in the base of the swing hanger, and use a wrench or electric drill to tighten the screw.



4

Attach the swing and test your installation. Gradually, shift your weight into the swing. If it holds you and it doesn't touch the floor, it means you have installed it correctly.



5

Adjust the height using the daisy chain as you wish.

