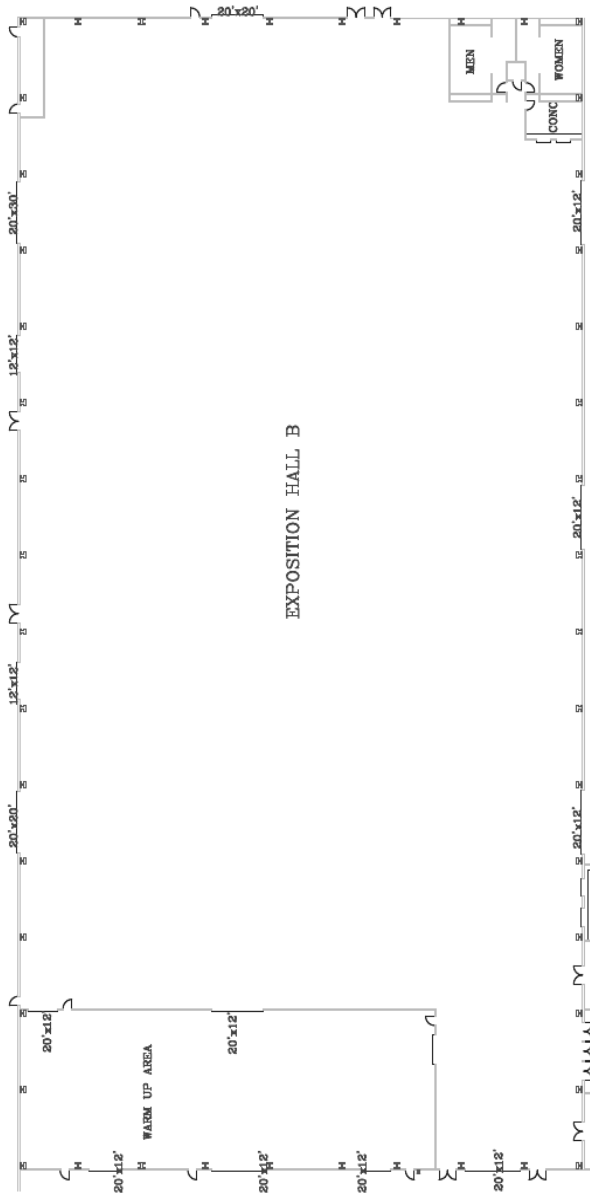


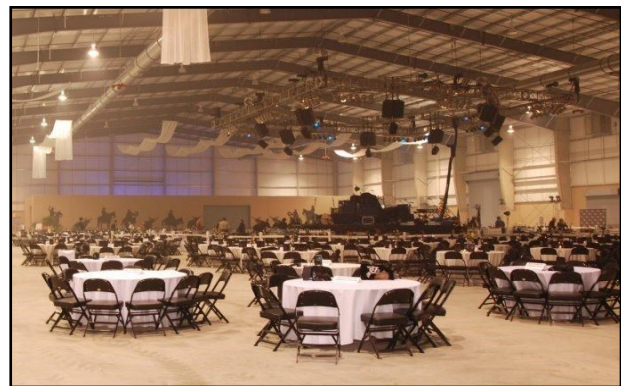
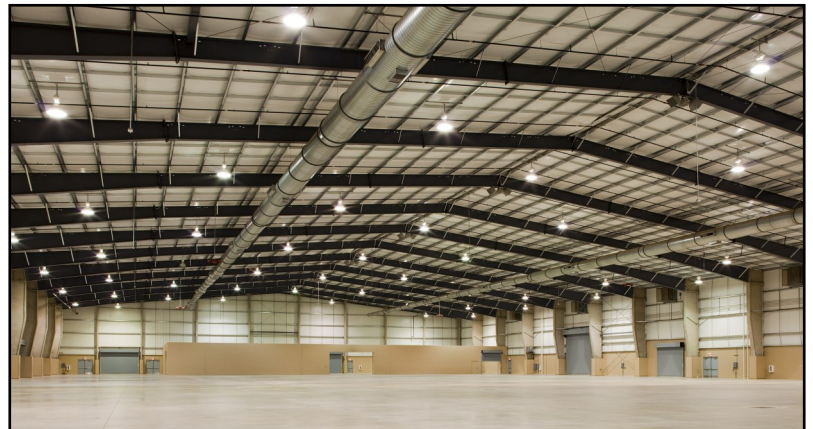
Expo Hall b

Expo Hall B is our second largest hall. The space is climate controlled and features concrete floors. A unique feature of Expo Hall B is its column-free open space, allowing for unobstructed views for guests at your event. Rental of the space includes access to a private 20' x 30' office space, built-in concessions, and a ticket booth. Additionally, you also get access to a large, separate space adjacent to the main area that can be used for a VIP area, separate event space, or storage.

As a safety measure to combat COVID-19, we have added UVC lighting in the HVAC system to kill any mold, germs, or contaminants in the air.



Specs	Pricing
<ul style="list-style-type: none"> 65,000 Sq. Ft./ 325' x 200' Space Capacities* <ul style="list-style-type: none"> - Banquet: 3,555 - Theatre: 7,730 - Standing: 10,665 <p><i>* May vary depending on event setup</i></p>	<ul style="list-style-type: none"> Rental for Expo Hall B only starts at \$4,000.00 ++ Rental for Expo Halls A,B, and C combined starts at a discounted rate of \$9,000 ++ Concert rate: \$6,500 - \$12,500 vs. 10% Gross Tix Sales <p><i>++ Additional services & fees apply, Non-Profit rates available.</i></p>



3201 E. Houston St., San Antonio, TX 78219
210-226-1177 www.freemancoliseum.com



BUILDING LIFE MEMORIES IS OUR BUSINESS!